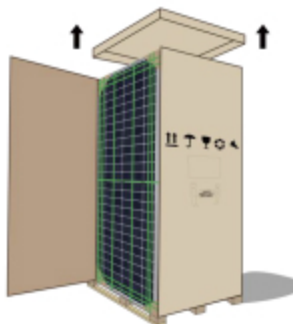


5.4 Unpacking Method B - for Portrait Packaging



1. Remove the wrapping film and packing belts.



2. Remove the top cover.



3. Remove the carton box.



4. Place the stand supporter from the glass or backsheet side.



5. Fix the slipping-stop beam to the supporter base from the other side



6. Cut off all the Landscape packing belts.

