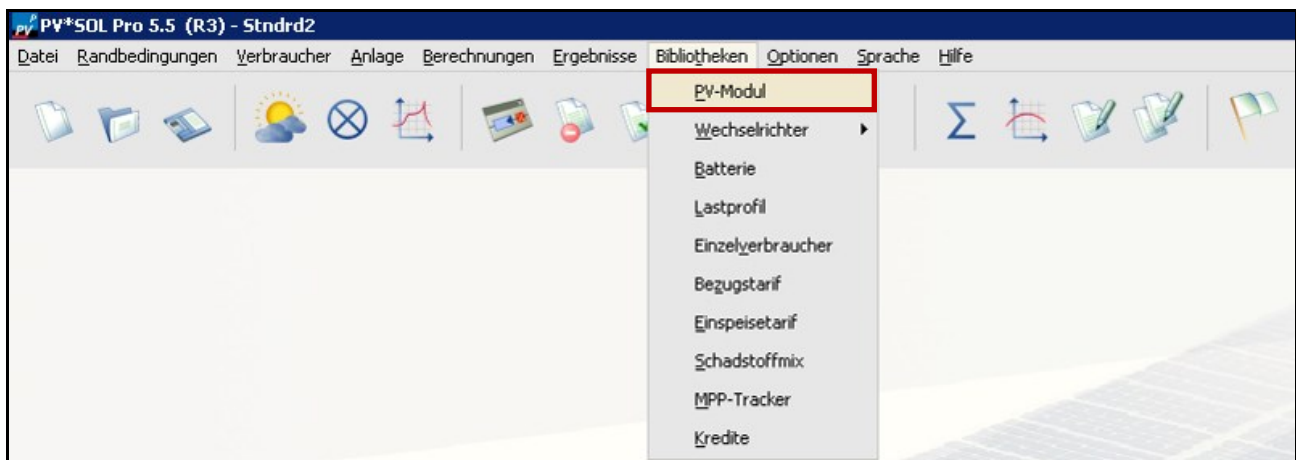
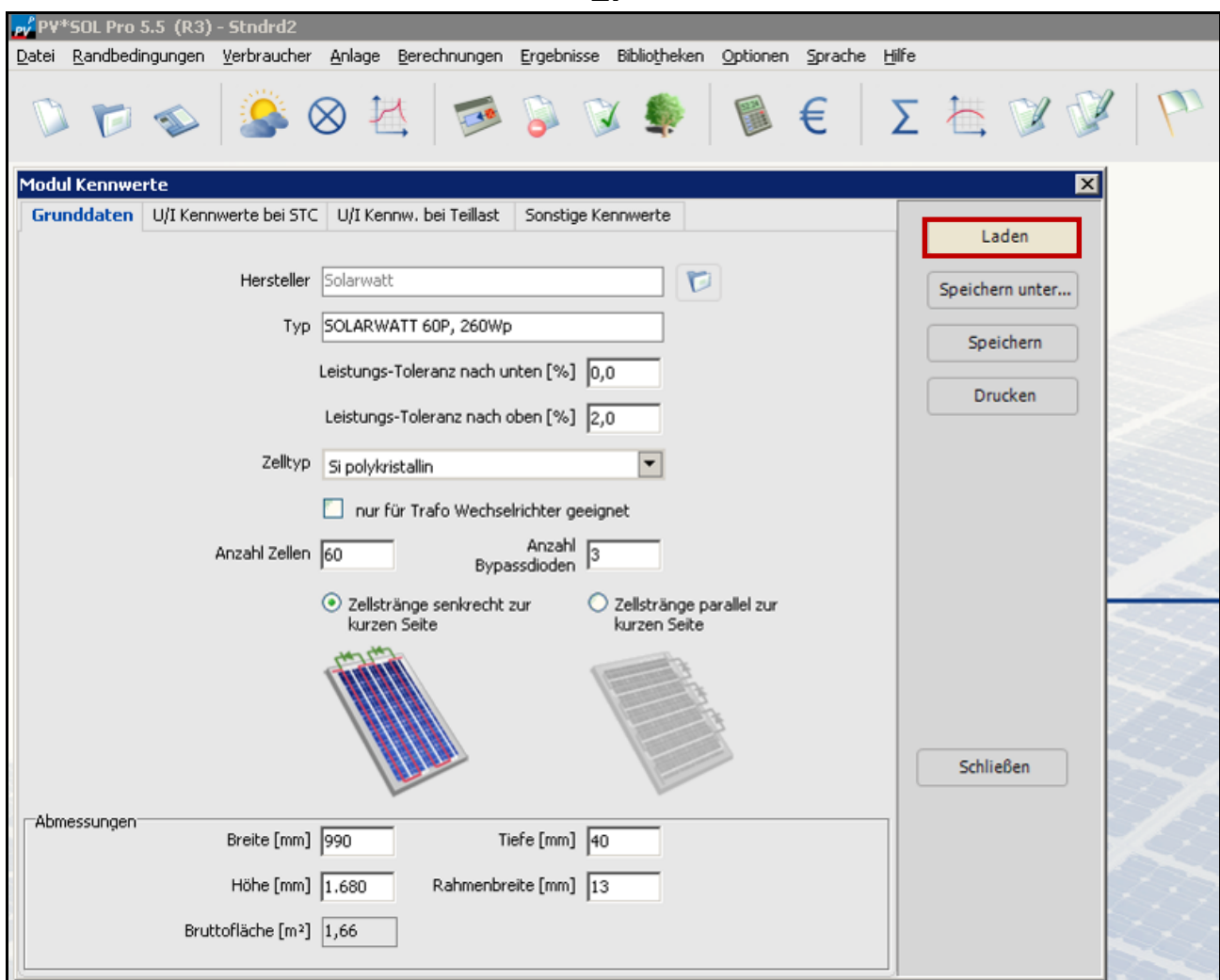


Anleitung zum Import der Datensätze in PVsol Pro Standalone

1.









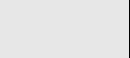

2.



3.

PV*SOL Pro 5.5 (R3) - Stndrd2

Datei | Randbedingungen | Verbraucher | Anlage | Berechnungen | Ergebnisse | Bibliotheken | Optionen | Sprache | Hilfe

Modul Kennwerte

Grunddaten | U/I Kennwerte bei STC | U/I Kennw. bei Teillast | Sonstige Kennwerte

Laden

Nur selbsterstellte Datensätze anzeigen
 Auch nicht mehr lieferbare Produkte anzeigen

Alle anzeigen	Hersteller	Typ	Leistung [W]	Spannung im MPP [V]	Max. Systemspannung [V]
Solarwatt	Solarwatt	SOLARWATT 36P, 150Wp	150.0	18.4	1000.0
	Solarwatt	SOLARWATT 60M high power, 285Wp	285.0	31.3	1000.0
	Solarwatt	SOLARWATT 60M high power, 290Wp	290.0	31.5	1000.0
	Solarwatt	SOLARWATT 60M high power, 295Wp	295.0	31.7	1000.0
	Solarwatt	SOLARWATT 60M style, 260Wp	260.0	31.2	1000.0
	Solarwatt	SOLARWATT 60M style, 265Wp	265.0	31.4	1000.0
	Solarwatt	SOLARWATT 60M style, 270Wp	270.0	31.6	1000.0
	Solarwatt	SOLARWATT 60P high power, 275Wp	275.0	31.2	1000.0
	Solarwatt	SOLARWATT 60P high power, 280Wp	280.0	31.4	1000.0
	Solarwatt	SOLARWATT 60P high power, 285Wp	285.0	31.6	1000.0
	Solarwatt	SOLARWATT 60P style, 250Wp	250.0	30.5	1000.0
	Solarwatt	SOLARWATT 60P style, 255Wp	255.0	30.7	1000.0
	Solarwatt	SOLARWATT 60P style, 260Wp	260.0	30.9	1000.0
	Solarwatt	SOLARWATT 60P, 250Wp	250.0	30.5	1000.0
	Solarwatt	SOLARWATT 60P, 255Wp	255.0	30.7	1000.0
	Solarwatt	SOLARWATT 60P, 260Wp	260.0	30.9	1000.0
	Solarwatt	SOLARWATT 60P, 265Wp	265.0	31.1	1000.0
	Solarwatt	SOLARWATT BLUE 60M, 265Wp	265.0	31.4	1000.0

Auswahl löschen | **Import Datensatz** | Export Datensatz | OK | Abbrechen